



GK100

Economical AC Drives

GK100 series is an economical AC drive with V/Hz & SVC control, jointly designed and produced by GTAKE and its partner company. The AC drive is small in size, compact in structure, powerful in function, stable in performance and high in cost performance. Widely used in various applications such as textile machine, paper-making machinery, machine tool, fan, pump, conveyor and so on.



POWER RATINGS

1 × 220-240 V 0.4 - 2.2 kW

3 × 380-480 V 0.75 - 7.5 kW

The Most Cost-effective Choice

- Promoted V/Hz
- SVC
- PID
- Multi-step Freq.
- ModBus
- Hot Pluggable Control Panel
- Stall Protections
- Braking Chopper Inbuilt
- Simple PLC
- FDT
-

Start Torque @0.25Hz
150%

Overload Capability
200%

Speed accuracy ±
0.5%

Ambient Temp °c
50

Speed Regulation
1:100

Torque Response ms
10



TERMINAL

Analog Input	×2	Analog Output	×1	Relay Output	×1
Digital Input	×5	Digital Output	×1	Communication Port*1	×1

*1 RS485/ModBus ONLY 4800/9600/19200/38400/57600/115200bps

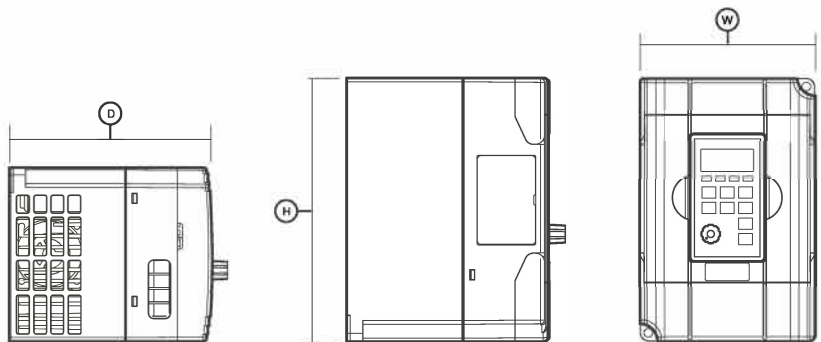
MODEL

Model ²	Power Rating (kW)	Rated Output Current (Amps)	Applicable Motor (kW)
GK100-2T0.4	0.4	2.3	0.4
GK100-2T0.75	0.75	4	0.75
GK100-2T1.5	1.5	7	1.5
GK100-2T2.2B	2.2	9.6	2.2
GK100-4T0.75	0.75	2.1	0.75
GK100-4T1.5	1.5	3.8	1.5
GK100-4T2.2B	2.2	5.1	2.2
GK100-4T3.7B	3.7	9.0	3.7
GK100-4T5.5B	5.5	13	5.5
GK100-4T7.5B	7.5	17	7.5

*2: 2T stands for single phase 200V, 4T stands for triphase 400V

DIMENSIONS

Unit, mm



Model	W	H	D
2T0.4~2T1.5 4T0.75~4T1.5	85.5	142	113
2T2.2B 4T2.2B	120	245	169
4T3.7B~4T7.5B	264	130	153.5





GK610

Compact AC Drive

GTAKE has launched GK610 compact AC drives (1 phase 220VAC and 3 phase 380VAC) to meet the market requirements of small power rating, compact size and simple speed control.



POWER RATINGS

1 × 200-240 V 0.4 - 2.2 kW

3 × 380-440 V 0.75 - 7.5 kW

Compact size Powerful functions

Promoted V/Hz

SVC1

SVC2

Support Sych & Asych Motor

Detachable Control Panel

Multi-step Freq.

I/O options

Precise autotune

Frequency Binding

Parameter Copy & Backup

Flying Start

Parameter Displayed & Hidden

Master & Auxiliary command & switchover

PID

FDT

S-curve

Simple PLC

2 Motor Switchover

Wobble Frequency Control

Fixed Length Control

Droop Control

Skip Frequency

Count Function

Preeminent Field-weakening Control

V/Hz Separated Control

Common DC Bus

Over Excitation Brake

Mechanical Brake

Restart Upon Power Loss

Cycle-By-Cycle Current Limit

Motor Thermal Protection

Stall Protections

.....

FEATURES

Start Torque @0.25Hz
180%

Overload Capability
200%

Speed accuracy \pm
0.2%

Ambient Temp $^{\circ}\text{C}$
50

Speed Regulation
1:200

Torque Response ms
10



Multi-drive Communication

RJ45 port for 485 communication, realizing multi-level networking with network cables, making the connection reliable with strong anti-interference ability.



Easy Commissioning

Support external keypad. Parameters upload & download is available by connecting to the GK620 & GK820 keypad with network cable.



High Power Density

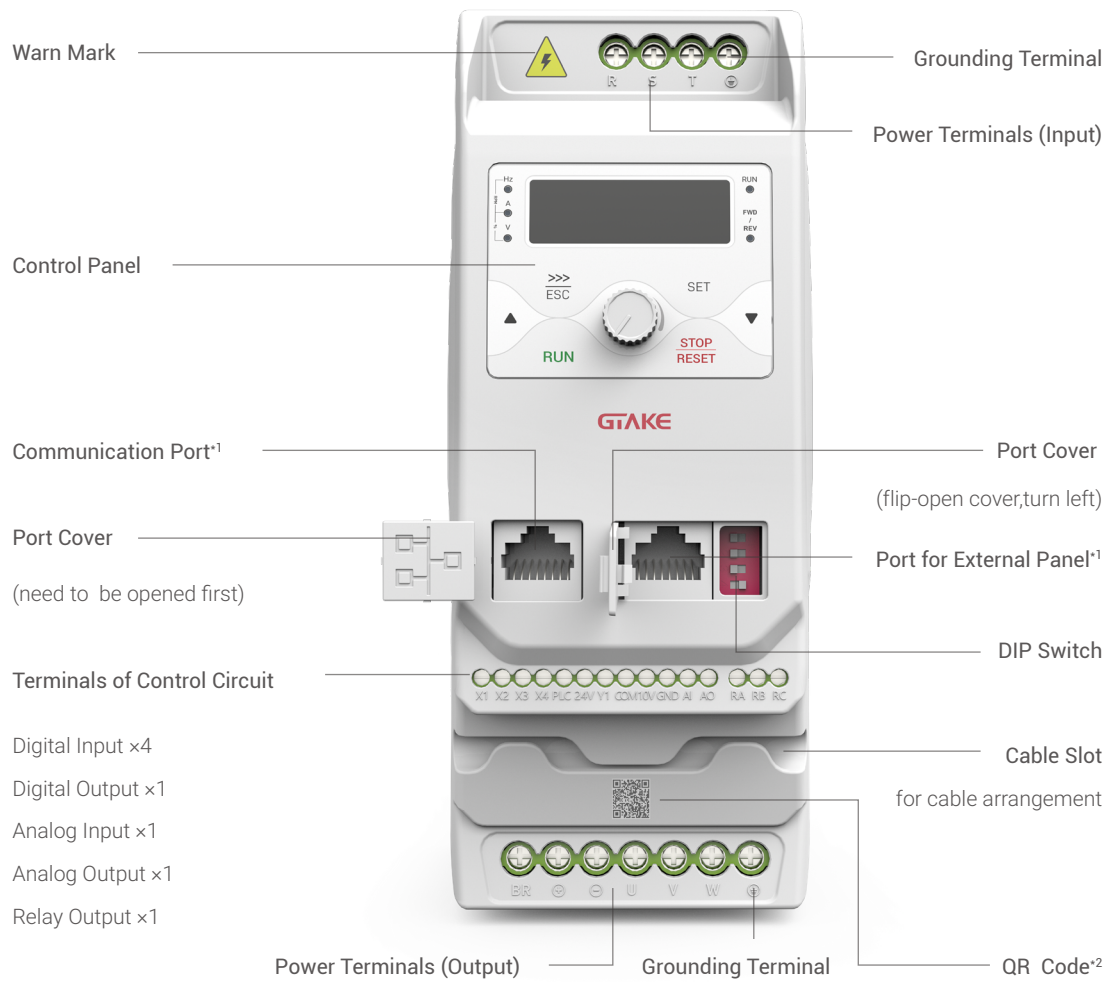
The size of GK610 is 33% smaller compared with that of the same power range of GK620. Besides, GK610 can be installed in parallel seamlessly, without considering the heat dissipation gap, minimizing the cabinet size.



Stable & Reliable

Fully enclosed housing & Isolated heat dissipation tunnel. Extra sleeves in IGBT pins are used to help isolate the dust maximally, guaranteeing the safety and reliability of electronic components.

COMPONENTS



*1: Dual network ports and multi-level 485 communication supported. Standard network cable and maximum communication distance less than 3 meters advised.
Shielded network cable recommended.
For multi-level communication, pin definition of the two network ports shall be consistent. For more details, refer to GK610 User Manual.

*2: Scan to obtain more product information.

MODEL

4T1.5G/2.2LB



B: in-built brake chopper
L: Light Duty H: Heavy Duty
T: Triple-phase
2: 200V 4: 400V

MODEL

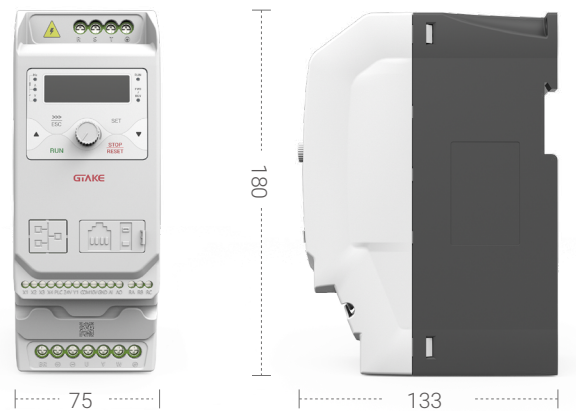
Model	Power Rating (kW)	Rated Output Current (Amps)	Rated Input Current (Amps) ²	Applicable Motor (kW)	Model	Power Rating (kW)	Rated Output Current (Amps)	Rated Input Current (Amps) ²	Applicable Motor (kW)
2S0.4B	0.4	2.6	5.5	0.4	4T2.2G/3.7LB	H 2.2	5.5	6.0	2.2
2S0.75B	0.75	4.5	9.2	0.75		L 3.7	8.0	10	3.7
2S1.5B	1.5	7.5	18	1.5	4T3.7G/5.5LB	H 3.7	9.0	10.5	3.7
2S2.2B	2.2	10	23	2.2		L 5.5	11	14	5.5
4T0.75G/1.5LB	H 0.75	2.5	3.5	0.75	4T5.5G/7.5LB	H 5.5	13	14.6	5.5
	L 1.5	3.8	5.0	1.5		L 7.5	16	20	7.5
4T1.5G/2.2LB	H 1.5	3.8	5.0	1.5	4T7.5G/11LB	H 7.5	17	20.5	7.5
	L 2.2	4.8	5.5	2.2		L 11	21	25	11

L Light Duty **H** Heavy Duty

DIMENSION

Unit, mm

- The figure showed on the right is the dimension of 4T3.7G/5.5LB and below
- Mounting dimension: 66 × 170.5 × 133
- Support DIN rail wall-mounting
- Dimension of 4T5.5G/7.5L~7.5G/11LB is: W×H×D = 100 × 224.5 × 152.5



AC DRIVE

JIANGSU GTAKE ELECTRIC CO., LTD.

ADDR. : Building 10, Zhong-yun-tai Industrial Park, Tangtou Road NO.1, Bao'an District, Shenzhen, China, 518108

www.gtake.com.cn/en

T +86 755 86392601

F +86 755 86392625

M info@gtake.com.cn

All Rights © GTAKE





GK620

General Purpose AC Drives

The GK620 series are the drives that cover general purpose applications when they are requiring V/Hz and speed sensor-less vector control.



POWER RATINGS

3 × 380-480 V 0.75 - 630 kW

Versatile & Multifunctional

- Promoted V/Hz
- SVC1
- SVC2
- Multi-step Freq.
- Precise autotune
- Detachable Control Panel
- I/O options
- ModBus RTU, ProfiBus
- Frequency Binding
- Parameter Copy & Backup
- Flying Start
- Parameter Displayed & Hidden
- Master & Auxiliary command & switchover
- PID
- FDT
- S-curve
- Simple PLC
- 2 Motor Switchover
- Wobble Frequency Control
- Fixed Length Control
- Droop Control
- Skip Frequency
- Count Function
- Preeminent Field-weakening Control
- V/Hz Separated Control
- Common DC Bus
- Over Excitation Brake
- Mechanical Brake
- Restart Upon Power Loss
- Cycle-By-Cycle Current Limit
- Motor Thermal Protection
- Stall Protections
-

Start Torque @0.25Hz
180%

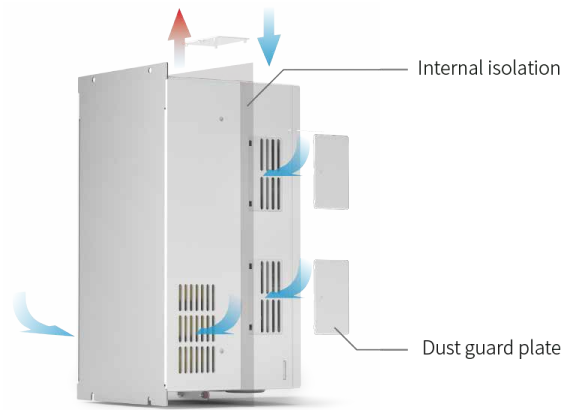
Overload Capability
200%

Speed accuracy \pm
0.2%

Ambient Temp °C
50

Speed Regulation
1:200

Torque Response ms
10



TERMINAL

Analog Input	x2 [3]^{*1}	Analog Output	x1 [3]	Relay Output	x1 [3]
Digital Input	x6 [8]	Digital Output ^{*2}	x2	Communication Port ^{*3}	x1
Option Board Interface	x1	for Fieldbus options or I/O options			

*1 A [B] : A - local B - extensible

*2 One of which (Y2/DO) supports high-speed pulse output

*3 RS485/ModBus ONLY 4800/9600/19200/38400/57600/115200bps Maximum distance - 500m

OPTION

Fieldbus options

EPC-CM1
EPC-CM2

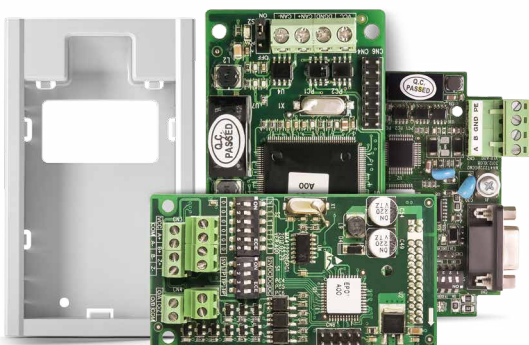


I/O options

EPC-TM1 Analog & Digital
EPC-TM2 PT100 & I/O
EPC-VD1 Voltage
EPC-VD2 Bus voltage detection & for optimized flying start
EPC-IM1 Analog for injection
EPC-IM2 Current analog
EPC-RT1 Real-time clock

Others

KBU-DZ1 Base for keypad
APP for PC **FREE** Gtake Monitoring
APP for PC **FREE** Firmware Update Tool



MODEL

4T7.5G/11LB



- B: With built-in braking chopper
- L: Light duty G: Heavy duty
- T: Tri-phase S: Single phase
- 2: 200V level 4: 400V level
- 5: 460V level 6: 690V level

Model		Power Rating (kW)	Rated Output Current (Amps)	Rated Input Current (Amps) ¹⁴	Applicable Motor (kW)	Model		Power Rating (kW)	Rated Output Current (Amps)	Rated Input Current (Amps) ¹⁴	Applicable Motor (kW)
4T0.75G/1.5LB	H	0.75	2.5	3.5	0.75	4T30G/37L(B) ¹⁵	H	30	60	65	30
	L	1.5	3.8	5.0	1.5		L	37	72	76	37
4T1.5G/2.2LB	H	1.5	3.8	5.0	1.5	4T37G/45L(B) ¹⁵	H	37	75	80	37
	L	2.2	4.8	5.5	2.2		L	45	91	95	45
4T2.2G/3.7LB	H	2.2	5.5	6.0	2.2	4T45G/55L(B) ¹⁵	H	45	91	83	45
	L	3.7	8.0	10	3.7		L	55	112	102	55
4T3.7G/5.5LB	H	3.7	9.0	10.5	3.7	4T55G/75L(B) ¹⁵	H	55	112	102	55
	L	5.5	11	14	5.5		L	75	142	128	75
4T5.5G/7.5LB	H	5.5	13	14.6	5.5	4T75G/90L(B) ¹⁵	H	75	150	157	75
	L	7.5	16	20	7.5		L	90	176	180	90
4T7.5G/11LB	H	7.5	17	20.5	7.5	4T90G/110L	H	90	176	160	90
	L	11	21	25	11		L	110	210	192	110
4T11G/15LB	H	11	24	29	11	4T110G/132L	H	110	210	192	110
	L	15	30	35	15		L	132	250	230	132
4T15G/18.5LB	H	15	30	35	15	4T132G/160L	H	132	250	232	132
	L	18.5	36	40	18.5		L	160	304	280	160
4T18.5G/22LB	H	18.5	39	44	18.5	4T160G/185L	H	160	310	285	160
	L	22	45	50	22		L	185	350	326	185
4T22G/30LB	H	22	45	50	22	4T185G/200L	H	185	350	326	185
	L	30	56	60	30		L	200	380	354	200
						4T200G/220L	H	200	380	354	200
							L	220	430	403	220

MODEL

Model		Power Rating (kW)	Rated Output Current (Amps)	Rated Input Current (Amps) ^{*4}	Applicable Motor (kW)	Model		Power Rating (kW)	Rated Output Current (Amps)	Rated Input Current (Amps) ^{*4}	Applicable Motor (kW)
4T220G/250L	H	220	430	403	220	4T355G/400L	H	355	650	624	355
	L	250	470	441	250		L	400	725	699	400
4T250G/280L	H	250	470	441	250	4T400G/450L	H	400	725	699	400
	L	280	520	489	280		L	450	820	790	450
4T280G/315L	H	280	520	489	280	4T450G/500L	H	450	820	790	450
	L	315	590	571	315		L	500	860	835	500
4T315G/355L	H	315	590	571	315	4T500G		500	860	835	500
	L	355	650	624	355	4T560G		560	950	920	560
						4T630G		630	1100	1050	630

L Light duty **H** Heavy duty

*4: The green numbers say the rated input currents configured DC reactors;

*5: (B) means break chopper is optionally inbuilt.



The rated power bigger than 630kW are customizable. Contact GTAKE for more.

DIMENSIONS

Unit, mm

4T0.75G/1.5LB~3.7G/5.5LB

WxHxD - 93x190x152

Mounting dimensions 70x180x152



4T5.5G/7.5LB~7.5G/11LB

WxHxD - 120x245x169

Mounting dimensions 80x233x169

4T11G/15LB

WxHxD - 145x280x179

Mounting dimensions 105x268x179

4T15G/18.5LB~22G/30LB

WxHxD - 190x365x187

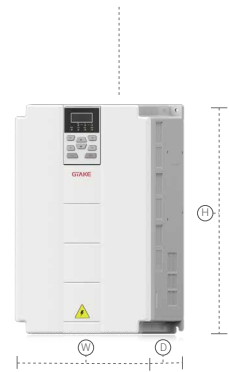
Mounting dimensions 120x353x187



4T30G/37L(B)~37G/45L(B)

WxHxD - 250x400x235

Mounting dimensions 230x380x235



4T45G/55L(B)~55G/75L(B)

WxHxD - 300x545x255

Mounting dimensions 245x523x255



4T75G/90L(B)

WxHxD - 385x670x261

Mounting dimensions 260x640x261



4T90G/110L~110G/132L

WxHxD - 395x785x291

Mounting dimensions 260x750x291



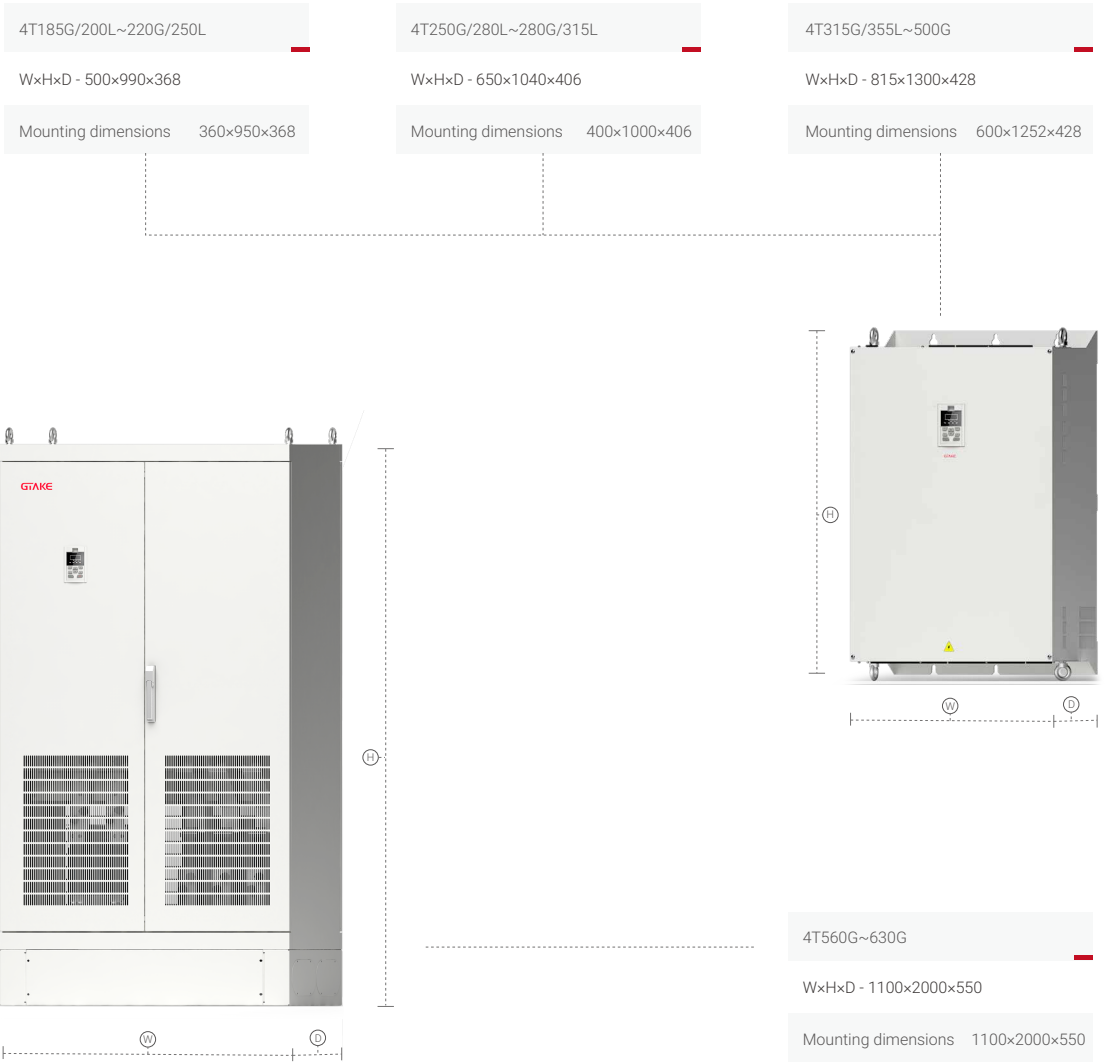
4T132G/160L~160G/185L

WxHxD - 440x900x356

Mounting dimensions 300x865x356

DIMENSIONS

Unit, mm

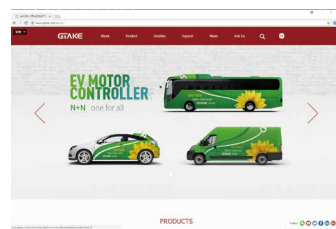


MORE

Further information is procurable through following sources:



PRODUCT CATALOG



OFFICIAL WEBSITE



@GtakeElectric



@Gtake

SOCIAL MEDIA





GK820

High Performance AC Drives

The GK820 series are the drives that cover an entire range of applications, particularly in demanding ones that require precise speed control, torque control, fast response, etc.



POWER RATINGS

3 × 380-480 V 1.5 - 630 kW

More Beyond Inheritance

- Promoted V/Hz
- SVC1
- SVC2
- VC
- Multi-step Freq.
- Precise autotune
- Asynchronous & Synchronous Motor Supported
- ModBus, ModbusTCP, CAN, CANopen, Profibus, Profinet, EtherCat
- Frequency Binding
- Parameter Copy & Backup
- Flying Start
- Parameter Displayed & Hidden
- Master & Auxiliary command & switchover
- PID
- FDT
- Zero-speed Clamping
- Simple PLC
- 2 Motor Switchover
- Pulse Train Position Control
- Fixed Length Control
- Droop Control
- Feed Forward Control
- S-curve
- Preeminent Field-weakening Control
- V/Hz Separated Control
- Angular Positioning
- Over Excitation Brake
- Mechanical Brake
- Restart Upon Power Loss
- Cycle-By-Cycle Current Limit
- Motor Thermal Protection
- Stall Protections
-

Start Torque @0Hz
200%

Overload Capability
200%

Speed accuracy ±
0.02%

Ambient Temp °C
50

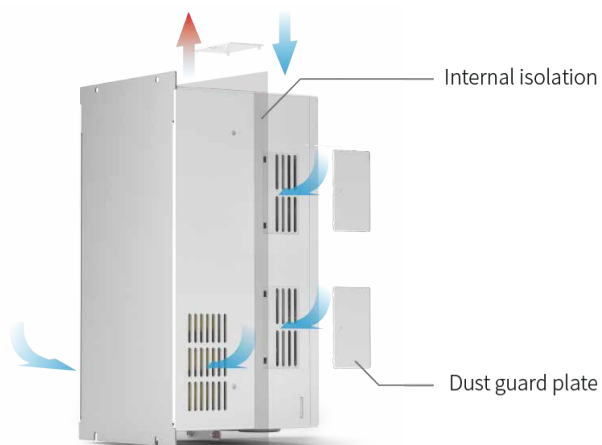
Speed Regulation
1:1000

Torque Response ms
5

Torque accuracy ±
5%

Speed Fluctuation ±
0.1%

Positioning accuracy ±
1 pulse



TERMINAL

Analog Input ×3 [4]^{*1} Analog Output ×2 [4] Relay Output ×2 [4]

Digital Input ×7 [9] Digital Output^{*2} ×2 Communication Port^{*3} ×1

Option Board Interface ×2 for Fieldbus options , I/O options or Decoder options

*1 A [B]: A - local B - extensible

*2 One of which (Y2/DO) supports high-speed pulse output

*3 RS485/ModBus ONLY 4800/9600/19200/38400/57600/115200bps Maximum distance - 500m

OPTION

Fieldbus options

EPC-CM1 **RS 232 CAN**
EPC-CM2 **PROFI BUS**
EPC-CM3 **CANopen**
EPC-NET02 **PROFI NET**
EPC-ModBus TCP **Modbus TCP**
EPC-CAT01 **EtherCAT**

Decoder options

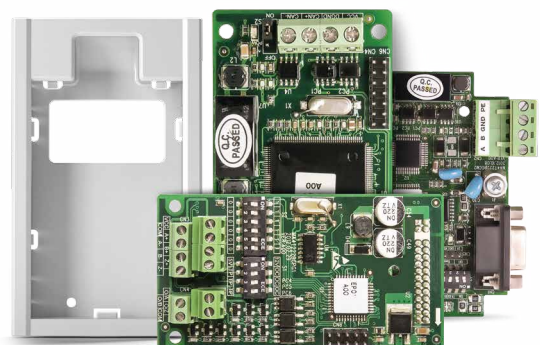
EPC-PG1~PG9 for ABZ/SIN/COS/UWV Encoder or Resolver

I/O options

EPC-TM1 Analog & Digital
EPC-TM2 PT100 & I/O
EPC-VD1 Voltage
EPC-VD2 Bus voltage detection & for optimized flying start
EPC-IM1 Analog for injection
EPC-IM2 Current analog
EPC-RT1 Real-time clock

Others

KBU-DZ1 Base for keypad
APP for PC **FREE** Gtake Monitoring
APP for PC **FREE** Firmware Update Tool



MODEL

4T7.5B



B: With built-in braking chopper
 Rated power, 7.5 : 7.5kW
 T: Tri-phase S: Single phase
 2: 200V level 4: 400V level
 5: 460V level 6: 690V level

Model	Power Rating (kW)	Rated Output Current (Amps)	Rated Input Current (Amps) ^{*4}	Applicable Motor (kW)	Model	Power Rating (kW)	Rated Output Current (Amps)	Rated Input Current (Amps) ^{*4}	Applicable Motor (kW)
4T1.5B	1.5	3.8	5.0	1.5	4T110	110	210	192	110
4T2.2B	2.2	5.5	6.0	2.2	4T132	132	250	232	132
4T3.7B	3.7	9.0	10.5	3.7	4T160	160	310	285	160
4T5.5B	5.5	13	14.6	5.5	4T185	185	350	326	185
4T7.5B	7.5	17	20.5	7.5	4T200	200	380	354	200
4T11B	11	24	29	11	4T220	220	430	403	220
4T15B	15	30	35	15	4T250	250	470	441	250
4T18.5B	18.5	39	44	18.5	4T280	280	520	489	280
4T22B	22	45	50	22	4T315	315	590	571	315
4T30(B) ^{*5}	30	60	65	30	4T355	355	650	624	355
4T37(B) ^{*5}	37	75	80	37	4T400	400	725	699	400
4T45(B) ^{*5}	45	91	83	45	4T450	450	820	790	450
4T55(B) ^{*5}	55	112	102	55	4T500G	500	860	835	500
4T75(B) ^{*5}	75	150	157	75	4T560G	560	950	920	560
4T90	90	176	160	90	4T630G	630	1100	1050	630

The rated power bigger than 630kW are customizable. Contact GTAKE for more.

*4: The green numbers say the rated input currents configured DC reactors.

*5: (B) means break chopper is optionally inbuilt.

DIMENSIONS

Unit, mm

4T1.5B~7.5B

WxHxD - 120x245x169

Mounting dimensions 80x233x169

4T11B

WxHxD - 145x280x179

Mounting dimensions 105x268x179

4T15B~22B

WxHxD - 190x365x187

Mounting dimensions 120x353x187



4T30(B)~37(B)

WxHxD - 250x400x235

Mounting dimensions 230x380x235



4T45(B)~55D(B)

WxHxD - 300x545x255

Mounting dimensions 245x523x255



4T75(B)

WxHxD - 385x670x261

Mounting dimensions 260x640x261



4T90~110

WxHxD - 395x785x291

Mounting dimensions 260x750x291

4T132~160

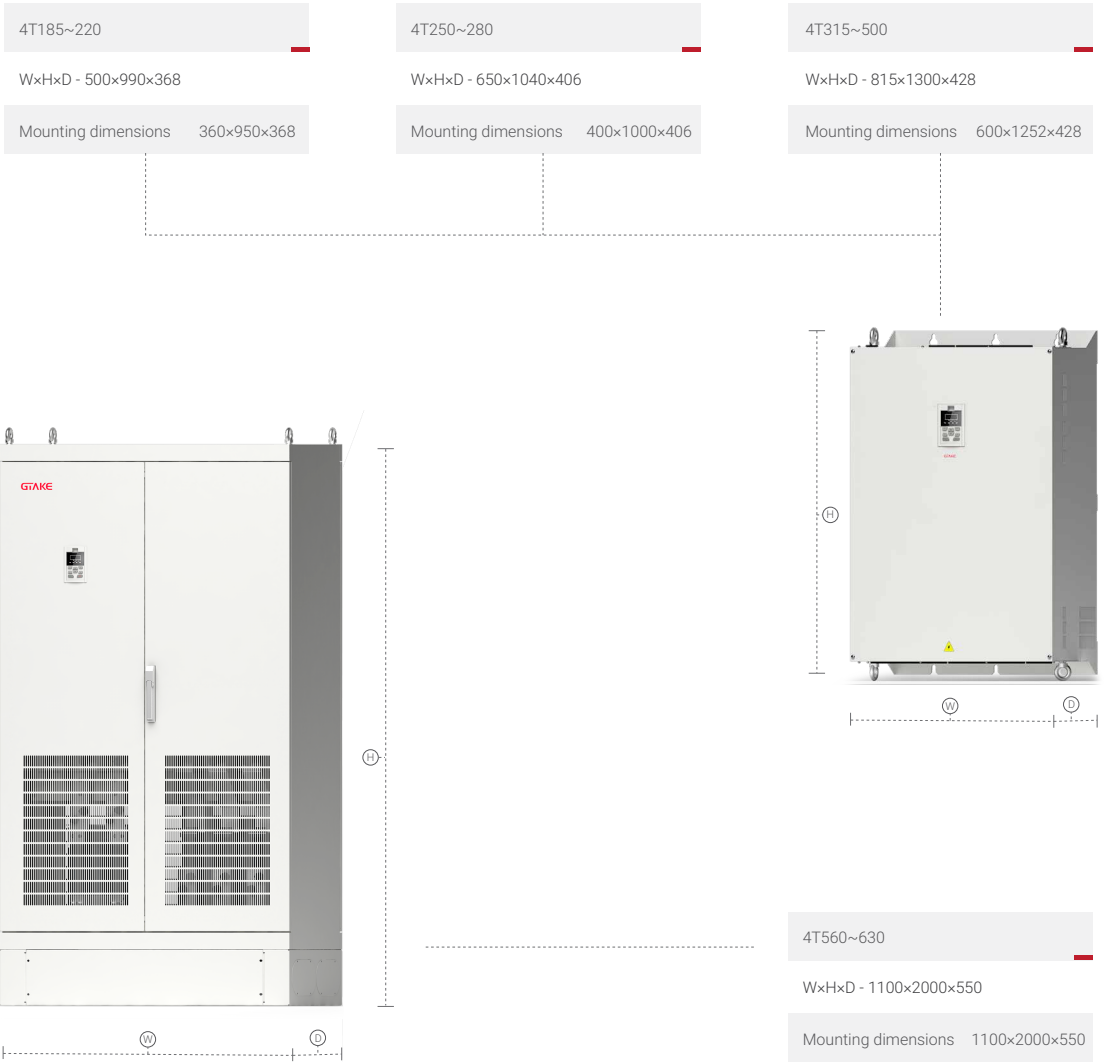
WxHxD - 440x900x356

Mounting dimensions 300x865x356



DIMENSIONS

Unit, mm

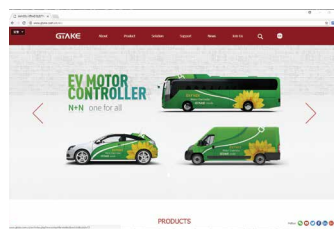


MORE

Further information is procurable through following sources:



PRODUCT CATALOG



OFFICIAL WEBSITE



@GtakeElectric

@Gtake

SOCIAL MEDIA



JIANGSU GTAKE ELECTRIC CO., LTD.

ADDR. : Building 10, Zhong-yun-tai Industrial Park, Tangtou Road NO.1, Bao'an District, Shenzhen, China, 518108

www.gtake.com.cn/en

T +86 755 86392601

F +86 755 86392625

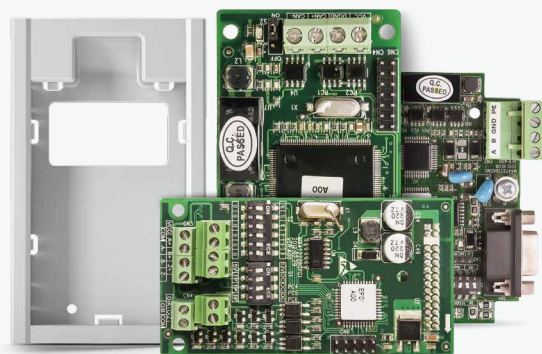
M info@gtake.com.cn

All Rights © GTAKE



OPTIONAL ACCESSORIES

GTAKE low-voltage AC Drives, characterized by flexible configuration and abundant features, are based on modular design method. GTAKE sophisticated R&D engineers develop optional accessories to ensure high cost-effective products and solutions for customers who only need to choose suitable accessories for different applications.



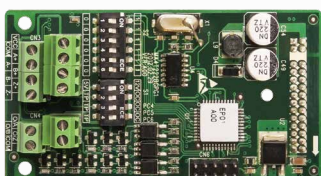
KBU-DZ1

KBU-DZ2

Bracket for external keypad

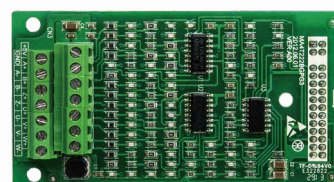
When the keypad needs to be extended, the bracket can be installed on the fixed surface.

- KBU-DZ1: applicable to GK620/GK820/GK1000/GK510/SLR/GK600E
- KBU-DZ2: applicable to GK500



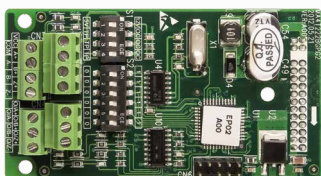
EPC-PG1 Applied to encoder signals of ABZ open collector or push-pull type

- Frequency dividing output: A/B/Z open collector
- Power supply: 12V
- Wiring method: terminal wiring



EPC-PG3 Applied to UVW type

- Power supply: 5 V ○
- Wiring method: terminal wiring ○



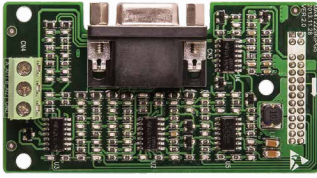
EPC-PG2 Applied to ABZ differential type

- Frequency dividing output: A/B/Z differential
- Power supply: 5 V / 12 V
- Wiring method: terminal wiring



EPC-PG4 Applied to resolver

- Wiring method: DB15 connector ○
- Analog input x2: ○
- EAI1(Can be used for motor temperature measurement), EAI2
- Power supply: 7 V ○
- Support CAN communication ○



EPC-PG5 Applied to SIN/COS type

- Power supply: 5 V
- Wiring method: DB15 connector



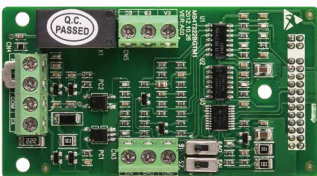
EPC-PG9 Applied to resolver

- Only support matching factor: motor pole pair number/ resolver pole pair number=1,2,3,4 motor
- Frequency dividing output: A/B/Z open-collector/differential
- Analog input x2:
EA11(Can be used for motor temperature measurement), EA12



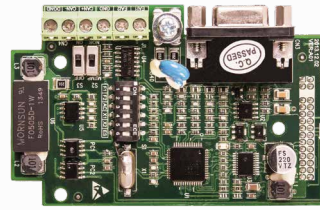
EPC-CM1 Communication board

- Support expanded 232 communication
- Support expanded CAN communication (only for GK820)



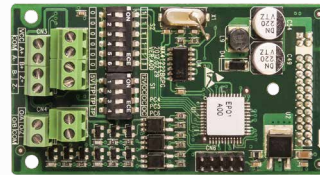
EPC-TM1 I/O option board

- Analog input x1
- Digital input x1
- Relay output x1
- Analog output x1



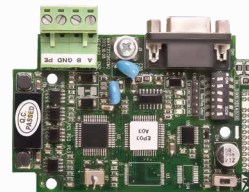
EPC-PG6 Applied to resolver

- Only support matching factor: motor pole pair number/ resolver pole pair number=1,2,3,4 motor
- Analog input x2:
EA11(Can be used for motor temperature measurement), EA12
- Power supply: 7 V
- Support CAN communication
- Wiring method: DB15 connector



EPC-PG8 Applied to ABZ differential type

- Frequency dividing output: A/B/Z differential
- Power supply: 5 V
- Wiring method: terminal wiring



EPC-CM2 Communication board

- Support Profibus-DP communication
- Wiring method: DB9 or terminal wiring



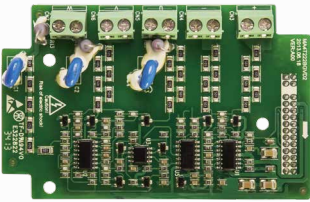
EPC-CM3 Communication board

- Support CANopen communication



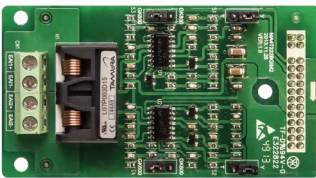
EPC-TM2 I/O option board

- PT100 temperature detection x2
- Digital input x2
- Relay output x2
- Analog output x2



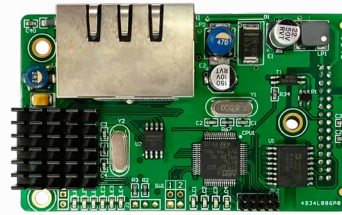
EPC-VD2 Voltage detection board

- Support output voltage detection, realizing speed search function
- Support bus voltage detection



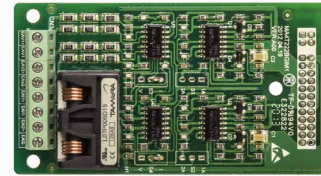
EPC-IM2 Analog I/O option board

- Current analog input x2: Input current range: 0-1A



EPC-NET02 ProfiNet Communication Card

- Support ProfiNet communication
- Wiring method: RJ45 x2



EPC-IM1 Analog I/O option board

- Analog input x2: voltage or current optional.
Current input range: 0-1A; Voltage input range: 0-24V



EPC-RT1 I/O option board

- Real-time clock input
- Relay output x1
- Analog output x1

FUT Firmware Update Tool

- Firmware update tool for PC
- Support all series products

FREE

